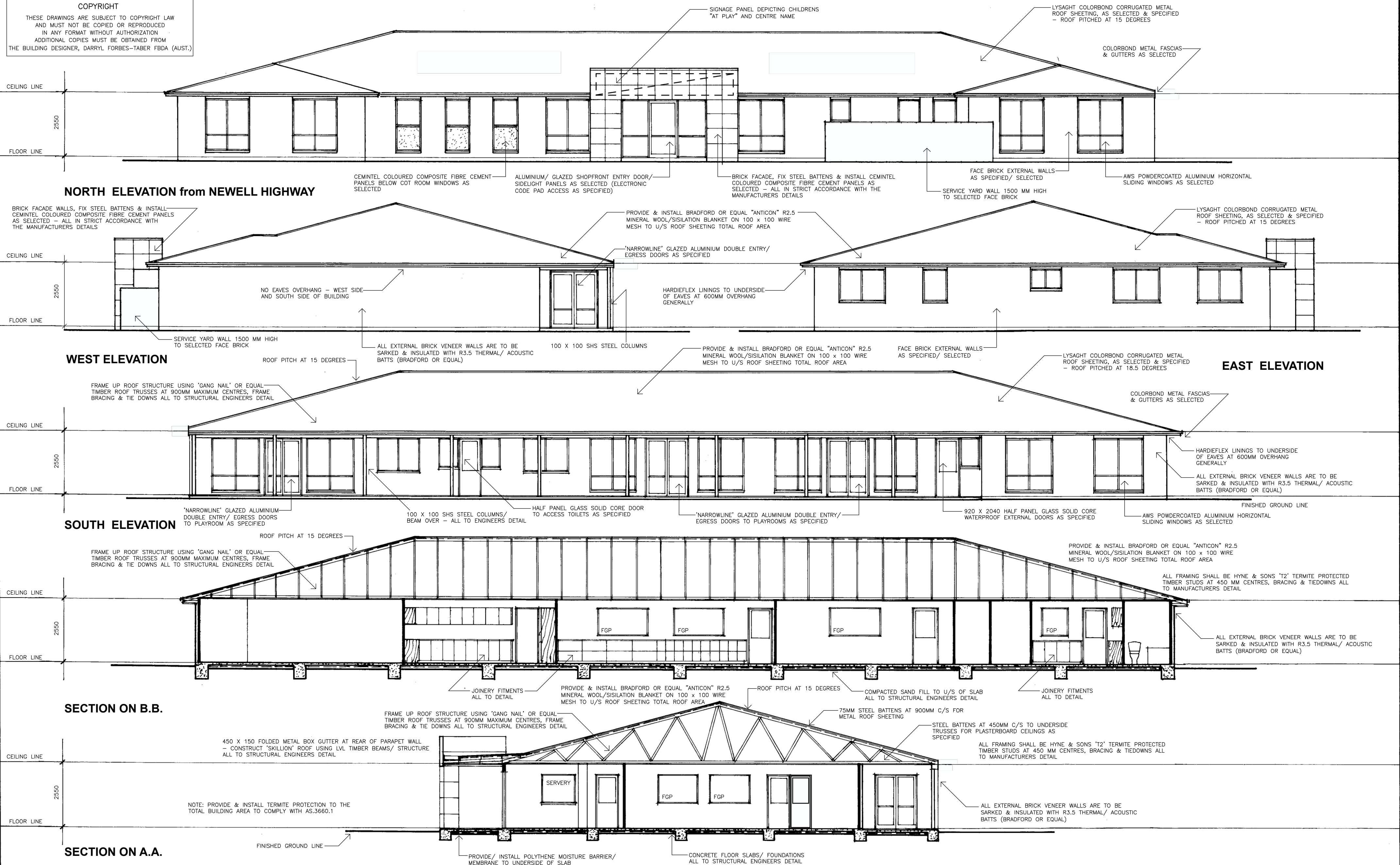


COPYRIGHT
THESE DRAWINGS ARE SUBJECT TO COPYRIGHT LAW
AND MUST NOT BE COPIED OR REPRODUCED
IN ANY FORMAT WITHOUT AUTHORIZATION
ADDITIONAL COPIES MUST BE OBTAINED FROM
THE BUILDING DESIGNER, DARRYL FORBES-TABER FBDA (AUST.)



DARRYL FORBES-TABER BUILDING DESIGN
PROJECT PLANNING & DESIGN
DARRYL J. FORBES-TABER FBDA (AUST.)
ABN: 76 776 059 697
CHARTERED, FELLOW & LIFE MEMBER (UNRESTRICTED LICENSE #6004)
PHONE: 02 6922 3258 / 0408 692 66 EMAIL: ppdesign@ozemail.com.au
PO BOX 8487 KOORINGAL, WAGGA WAGGA 2650 NSW
MULTI-AWARD WINNING BUILDING DESIGNER



PROPOSED NEW CHILDCARE CENTRE AT LOTS 1057 / 1058,
D.P. NO. 753135, NO. 206 NEELD STREET,
WEST WYALONG, NEW SOUTH WALES
for WEST WYALONG CHILDCARE CENTRE PTY. LTD.

ELEVATIONS & SECTION DETAILS

AMENDMENTS:

SCALE: 1:100 AT A2
DATE: 22ND APRIL 2021
DRAWN: D.J. FORBES-TABER FBDA
SHEETS IN SET:
DRAWING NO./SHEET NO.:

5555-4